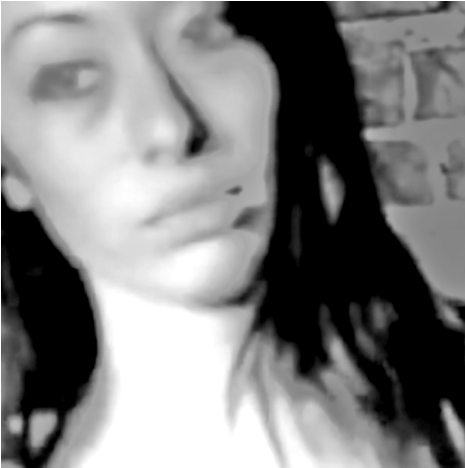


Sexual Exploitation



What is trafficking for Sexual Exploitation?

Sexual Exploitation involves any non-consensual or abusive sexual acts performed without a victim's permission. This can also include prostitution, escort work and pornography. Victims of Sexual Exploitation are often removed from their communities leaving them vulnerable to exploitation and reducing their ability to escape.

Many victims are groomed over a long period of time and are coerced into performing sexual acts once they believe that they are in a relationship with their abuser. Many victims are therefore reluctant to speak out or seek help, or are unable to due to language barriers, fear of the police and organisations, fear of violence and being caught by their abusers. Many victims are unaware that they are being sexually exploited. Victims of sex trafficking may often be found working on the streets or places that offer sex acts such as massage parlours, saunas, strip clubs, adult bookshops and bars.

Statistics

- **673 cases of Sexual Exploitation were reported to the NRM in 2014.**
- **Of the 673 cases reported, 653 victims were women.**
- **In 2013 the most prevalent countries of origin for victims of sexual exploitation were Romania (15%), Albania (15%), UK (13%), Nigeria (7%), Thailand (7%) and Hungary (5%)**

What are the signs?

- Woman is possibly a foreign national. Sometimes with little understanding of English.
- They may be unhappy or unwilling to perform sexual acts.
- Frightened or in physical pain.
- Sees large number of clients each day/ night.
- Able to keep little/no money.
- Food paid for by another person. Little/no time off.
- Only knows sex-related English words. Women are never seen to leave the establishment.
- A large amount of security such as bars on windows, locked doors, surveillance and guards.

Useful resources

- 'Seeking Refuge? Trafficking, Sexual Exploitation and the Law', Rights of Women.
- 'Stolen smiles' a summary report on the physical and psychological health consequences of women and adolescents trafficked in Europe', Kathy Zimmerman et al.

Who to contact?

UK organisations working with victims of Sexual Exploitation include:

- Eaves - www.eavesforwomen.org.uk
- Unseen - www.unseenuk.org
- Women's Support Project - www.womenssupportproject.co.uk

Call **101** to contact your local police or 999 in an emergency

Call the Salvation Army's 24-hour confidential Referral Helpline on **0300 3038151**